

# Ocean View Branch Library Community Update

OCEANVIEW BRANCH



San Francisco Public Library  
**OCEAN VIEW BRANCH LIBRARY**  
COMMUNITY UPDATE | 06.09.2022

01

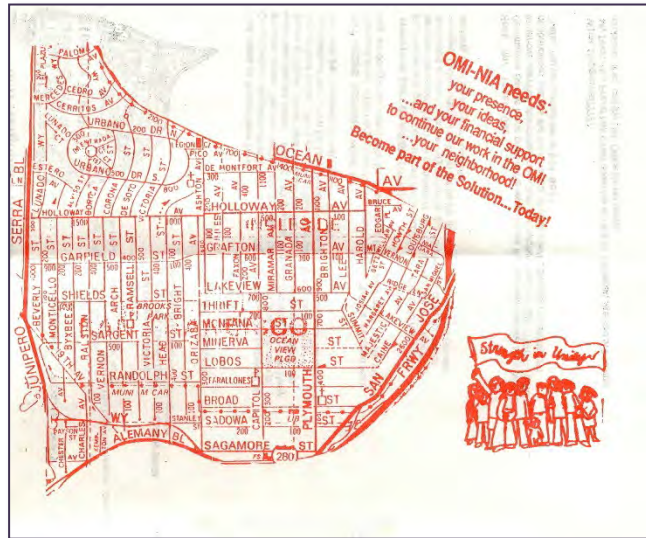


*San Francisco Public Library*

# WELCOME!

- Welcome and Introductions
- Ocean View Branch History
- Guiding Principles
- Community Engagement
- Preliminary Project Assessment (PPA)
- Local Initiatives
- Next Steps
- Questions

# Ocean View Library Branch History



- 1903 First Ocean View Branch opens on Broad Street near Capitol Avenue
- 1923 Ocean View Branch moves to 111 Broad St near Plymouth.
- 1980 Ocean View Branch changed from Branch Library to Reading Center with decrease in staffing and hours
- 1998 Community members appeal to Mayor Willie Brown for a new branch with full library services
- 2000 New Ocean View Branch opens on Randolph Street.

# GUIDING PRINCIPLES

- Libraries for the 21<sup>st</sup> Century
- Flexible and Adaptable Building Designs
- Multifunctional Community Program Areas
- Transparency and Ease of Wayfinding

# Community Engagement

- 2018 Branch Capital Projects Feasibility Study conducted
- 2019 Community Meetings on November 2, 6, & 23- Ocean View Feasibility Study
- 2019 Community meetings on February 20, March 9 & 12

Presentations and minutes available at  
[www.sfpl.org/oceanview-renovation](http://www.sfpl.org/oceanview-renovation).

# COMMUNITY FEEDBACK

- ***Community room is too small and needs afterhours access.***
- ***The library needs a larger presence in the neighborhood***
- ***Increase variety in collections and offer more items in Spanish.***
- ***The current location is too small to be a community hub.***

# PRELIMINARY PROJECT ASSESSMENT - PPA

# PRELIMINARY PROJECT ASSESSMENT (PPA)

- The PPA is preliminary planning review which provides planning and environmental feedback
- PPA results in an outline of planning procedures
- PPA next steps may include an Environmental Evaluation per CEQA
- *The building design represents preliminary location and scale. It is for planners use when establishing the environmental process.*



# LIBRARY LOCATION ALTERNATIVES



**A**

- NEIGHBORHOOD CONNECTIVITY
- SAFE PEDESTRIAN ACCESS
- ACCESSIBLE PATH FROM TRANSIT
- EXISTING VEHICULAR INFRASTRUCTURE
- LEVEL BUILDING SITE
- SYNERGY WITH EXISTING SITE AMENITIES WITHIN OMI NEIGHBORHOOD (DISTRICT 11)



**B**

- NEIGHBORHOOD CONNECTIVITY
- SAFE PEDESTRIAN ACCESS
- ACCESSIBLE PATH FROM TRANSIT
- EXISTING VEHICULAR INFRASTRUCTURE
- LEVEL BUILDING SITE
- SYNERGY WITH EXISTING SITE AMENITIES WITHIN OMI NEIGHBORHOOD (DISTRICT 11)



**C**

- NEIGHBORHOOD CONNECTIVITY
- SAFE PEDESTRIAN ACCESS
- ACCESSIBLE PATH FROM TRANSIT
- EXISTING VEHICULAR INFRASTRUCTURE
- LEVEL BUILDING SITE
- SYNERGY WITH EXISTING SITE AMENITIES WITHIN OMI NEIGHBORHOOD (DISTRICT 11)



**D**

- NEIGHBORHOOD CONNECTIVITY
- SAFE PEDESTRIAN ACCESS
- ACCESSIBLE PATH FROM TRANSIT
- EXISTING VEHICULAR INFRASTRUCTURE
- LEVEL BUILDING SITE
- SYNERGY WITH EXISTING SITE AMENITIES WITHIN OMI NEIGHBORHOOD (DISTRICT 11)





**D** RECOMMENDED SITE

- NEIGHBORHOOD CONNECTIVITY
- SAFE PEDESTRIAN ACCESS
- ACCESSIBLE PATH FROM TRANSIT
- EXISTING VEHICULAR INFRASTRUCTURE
- LEVEL BUILDING SITE
- SYNERGY WITH EXISTING SITE AMENITIES
- WITHIN OMI NEIGHBORHOOD (DISTRICT 11)





**PARCEL SIZE**

Project Lot 23,100 SF  
 Block / Lot 7136 / 060  
 Right of Way / Paper Street Area 8,520 SF

**ZONING**

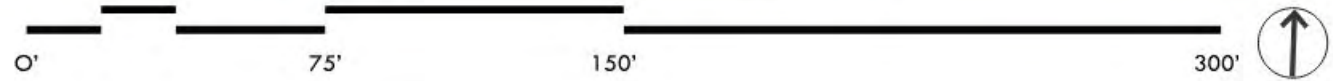
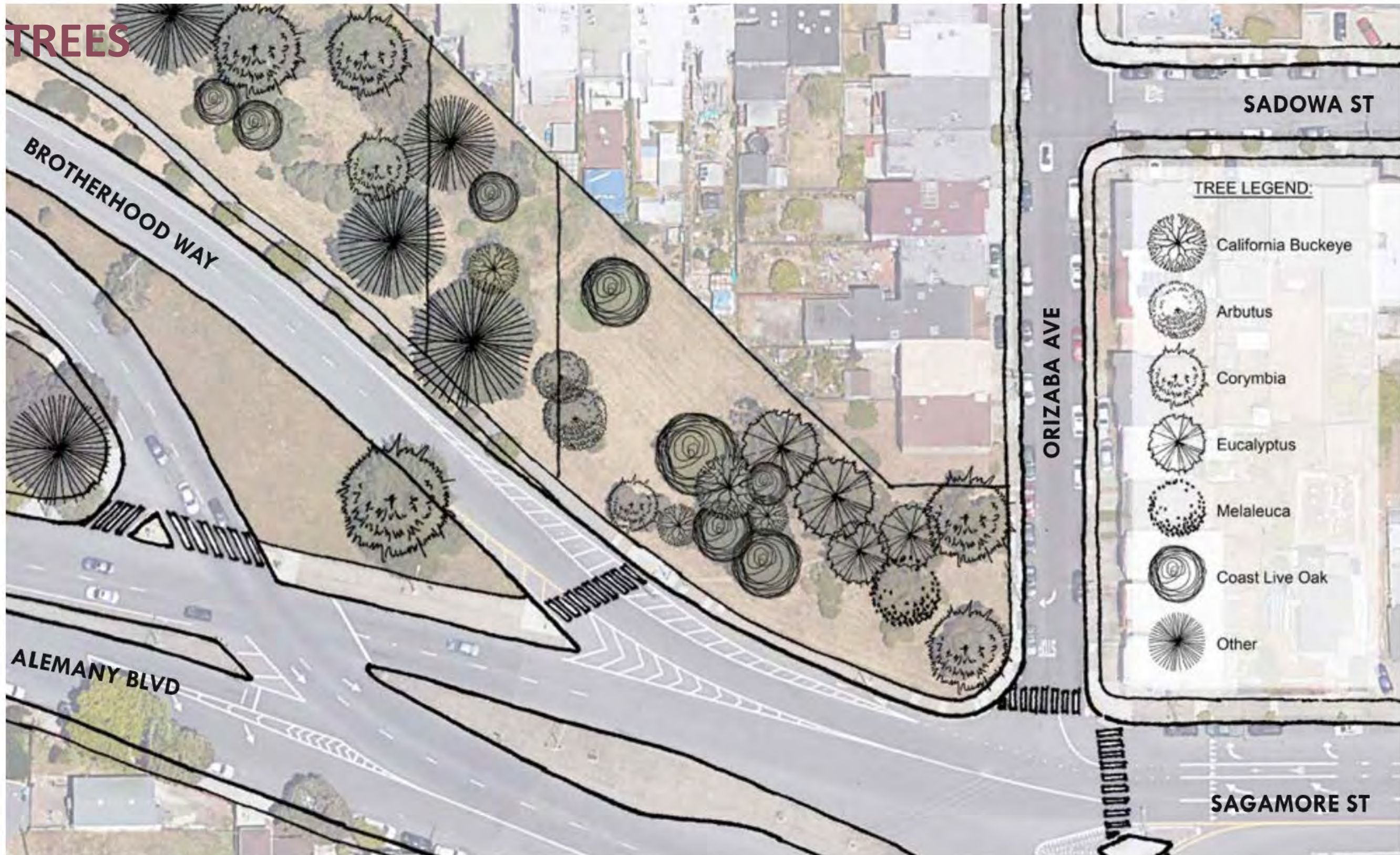
San Francisco Zoning District (P) Public  
 San Francisco Height & Bulk District (OS) Open Space  
 Planning District District 13, Ingleside  
 Supervisor District District 11  
 Special Use District Oceanview Large Residence & Within 1/4 Mile of Existing Fringe Financial Service  
 Setbacks None Required  
 Streetscape & Pedestrian Improvements Required

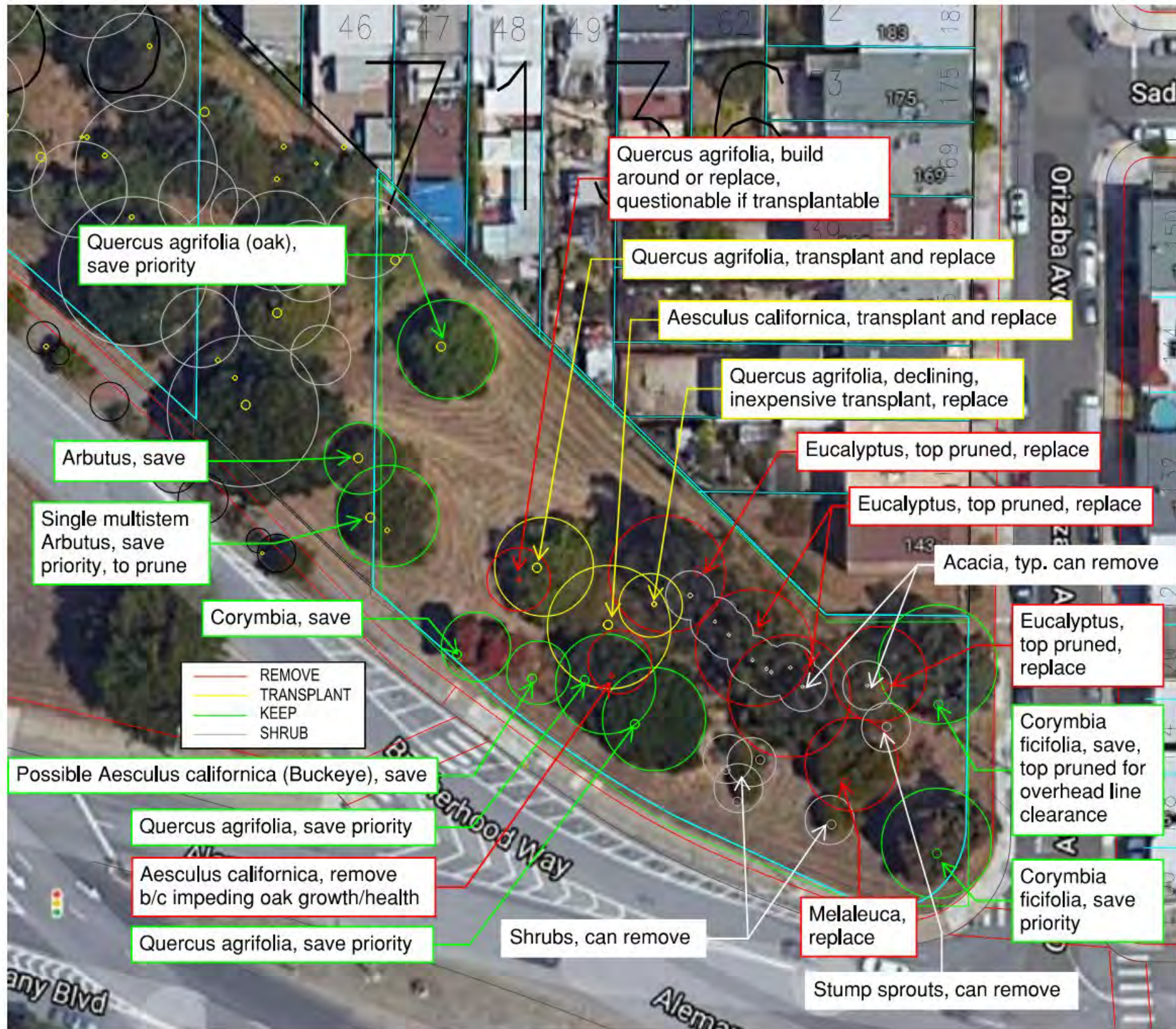




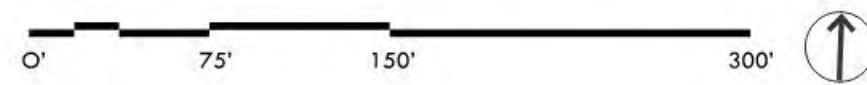


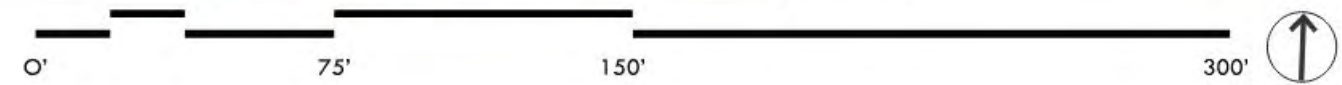
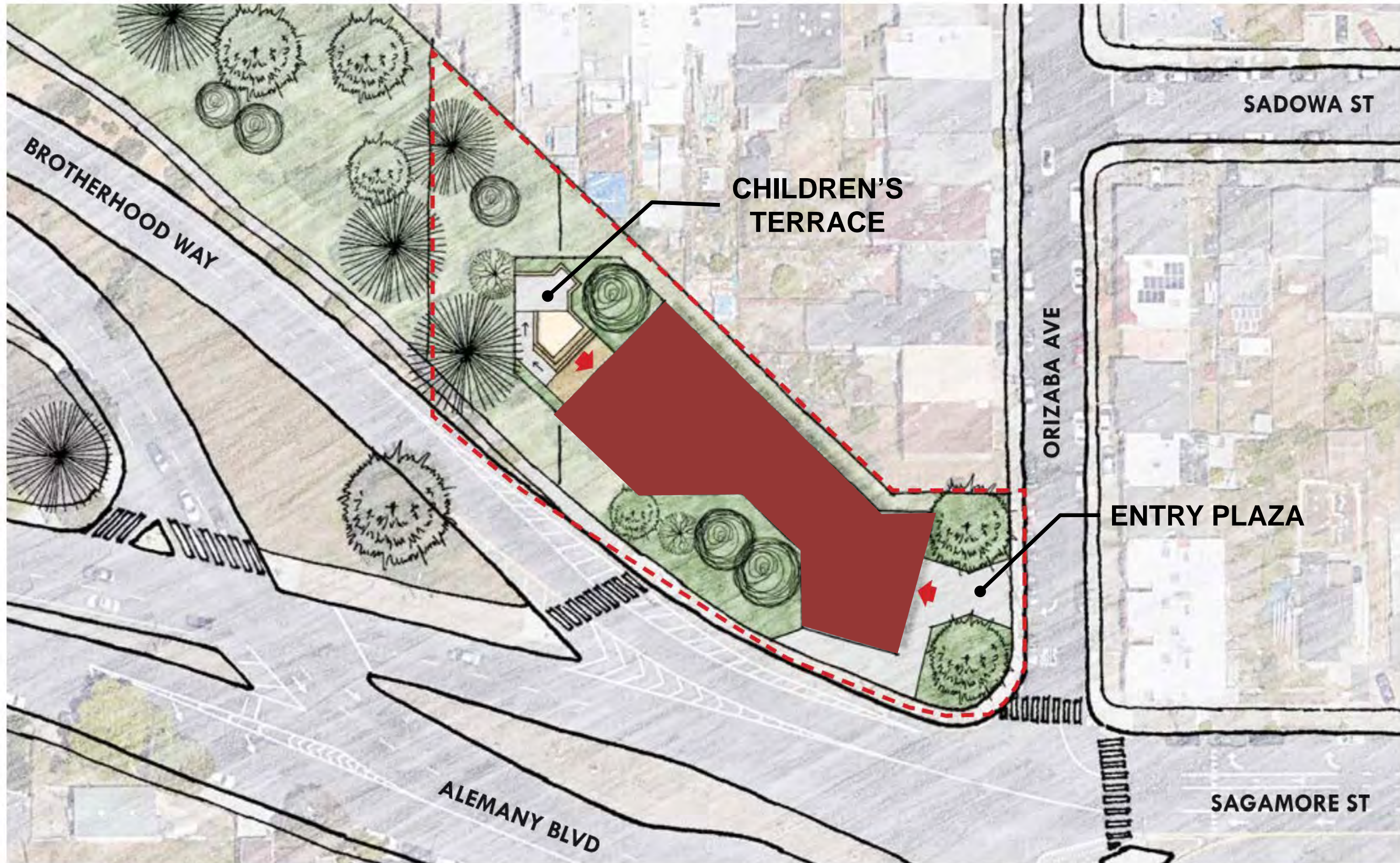
# SITE TREES





INITIAL TREE ASSESSMENT, PER WALKTHROUGH ON 11/04/2021 WITH NICK CRAWFORD (BUF)



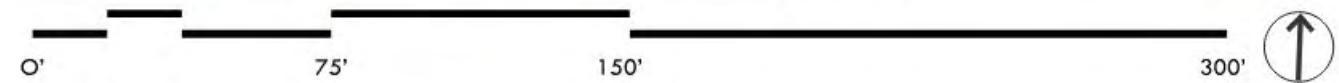


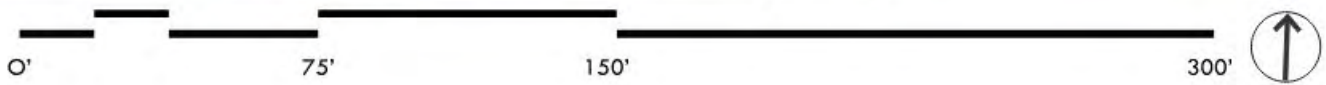
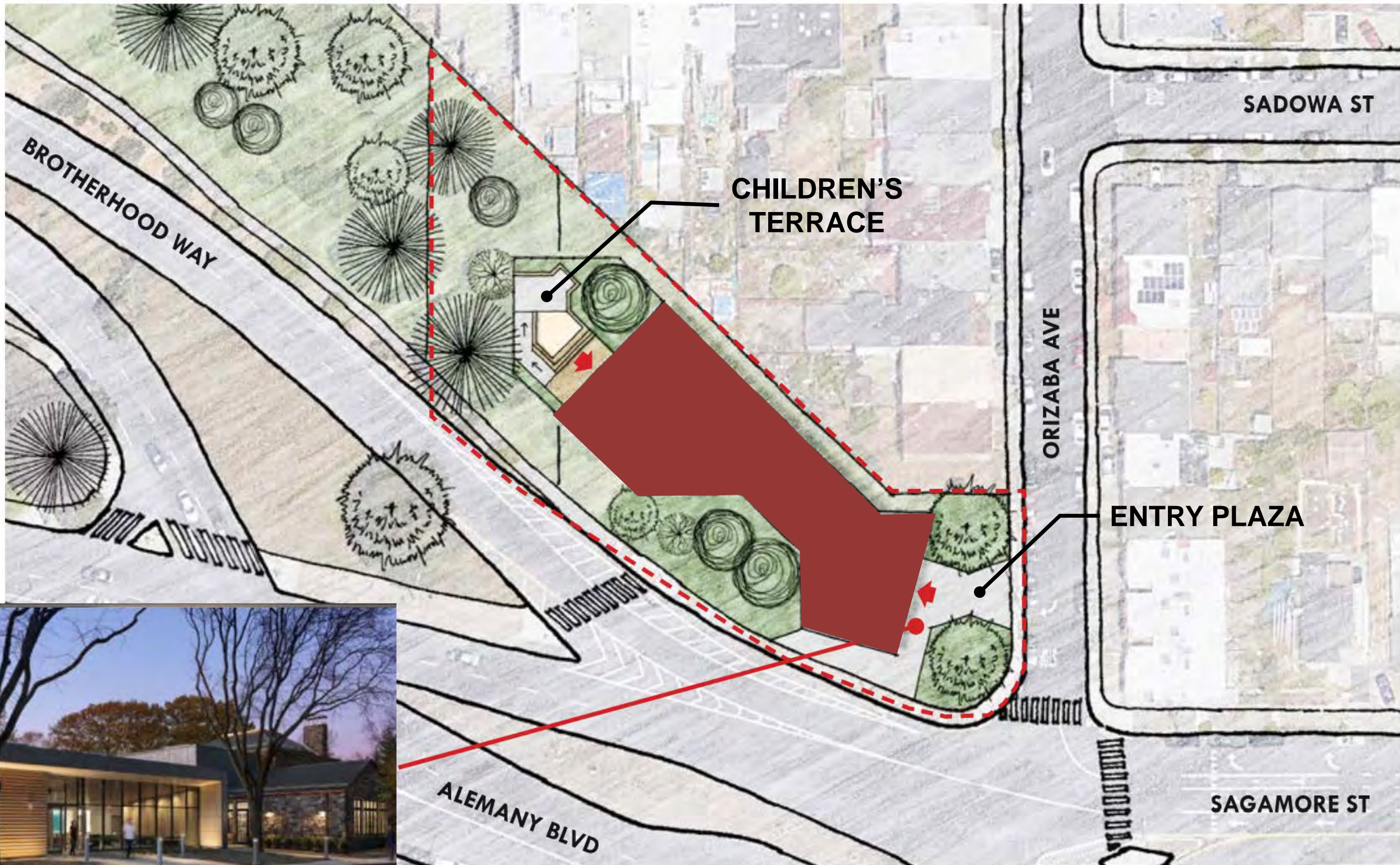




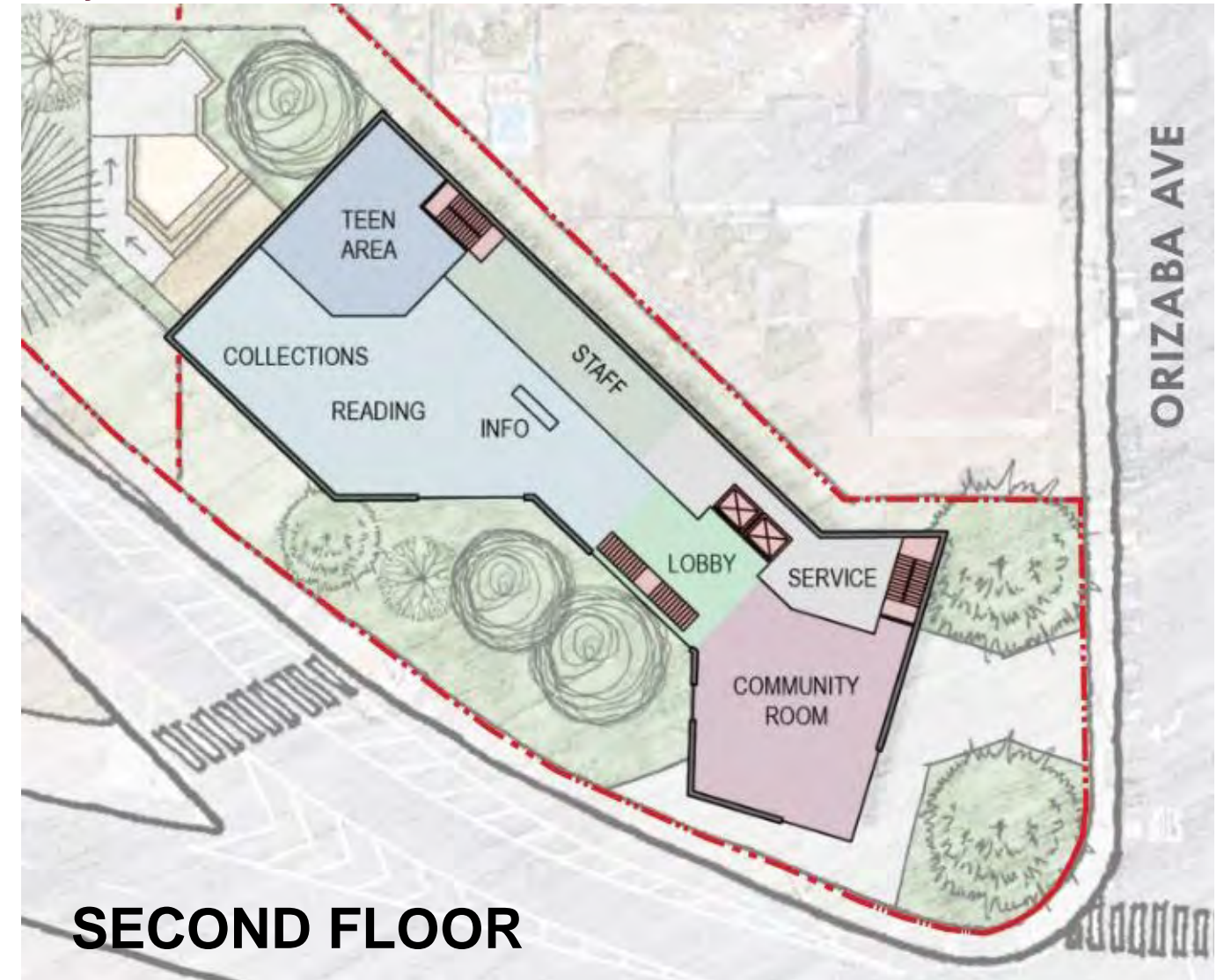
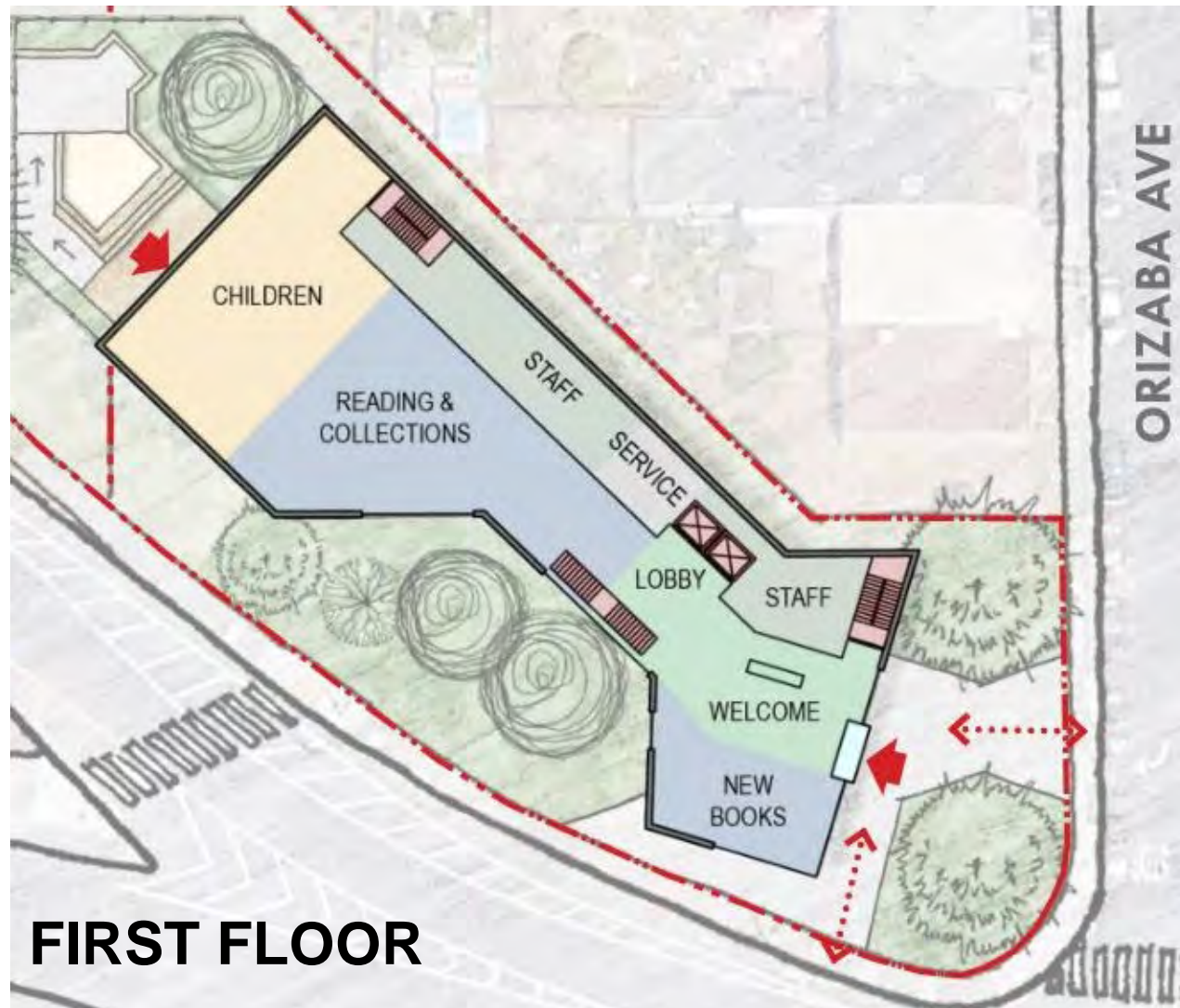


OUTDOOR CHILDREN'S AREA





**4,300 SF EXISTING VS UP TO 20,000 SF PROPOSED**



**PROGRAM HIGHLIGHTS:**  
MUCH LARGER COLLECTION  
ROBUST LANGUAGE COLLECTIONS  
LARGE CHILDREN'S ROOM  
DEDICATED TEEN ROOM  
MAKER / STEAM LAB

**CONNECTION TO OUTDOOR SPACE**  
MORE READERS SEATS & TABLES  
GROUP STUDY ROOMS  
TECHNOLOGY RICH  
LAPTOP LENDING, DEKTOP COMPUTING  
LARGE COMMUNITY ROOM – UP TO 200 PEOPLE



Noll & Tam Architects





# KEY DESIGN CONSIDERATIONS FROM PPA

1. Pedestrian safety and access
2. Partnering concept and co-locating public facilities
3. Design should anticipate potential future projects

# PLANNING SUMMARY

## *Environmental Studies Required for Planning Application:*

1. Biological resources - *tree study*
2. Geology and Soil - *geotechnical hazards study*
3. Shadow analysis – *impact on open space*
4. Noise – *impacts of mechanical equipment*
5. Transportation – *TBD, contingent on loading analysis*



# PLANNING SUMMARY

*Environmental Review:*

Categorical Exemption – *likely determination*

Initial Study/Mitigated Negative Declaration - *contingent*

# OCEAN VIEW BRANCH LIBRARY SCHEDULE AND NEXT STEPS

<i>SF Planning PPA intake</i>	<i>Feb 2022</i>
<i>PPA Letter issued</i>	<i>April 28, 2022</i>
Building Design	<b>Aug 2022 – Oct 2023</b>
Community Engagement	<b>Winter 2023</b>
Planning Application	<b>Fall 2023</b>

# OTHER LOCAL INITIATIVES

## OTHER LOCAL INITIATIVES

**San Francisco County Transportation Authority / Caltrans Grant:**

# **BROTHERHOOD WAY ACTIVE TRANSPORTATION AND OPEN SPACE PLAN**



**San Francisco  
County Transportation  
Authority**

**David Long**

Transportation Planner  
david.long@sfcta.org  
www.sfcta.org

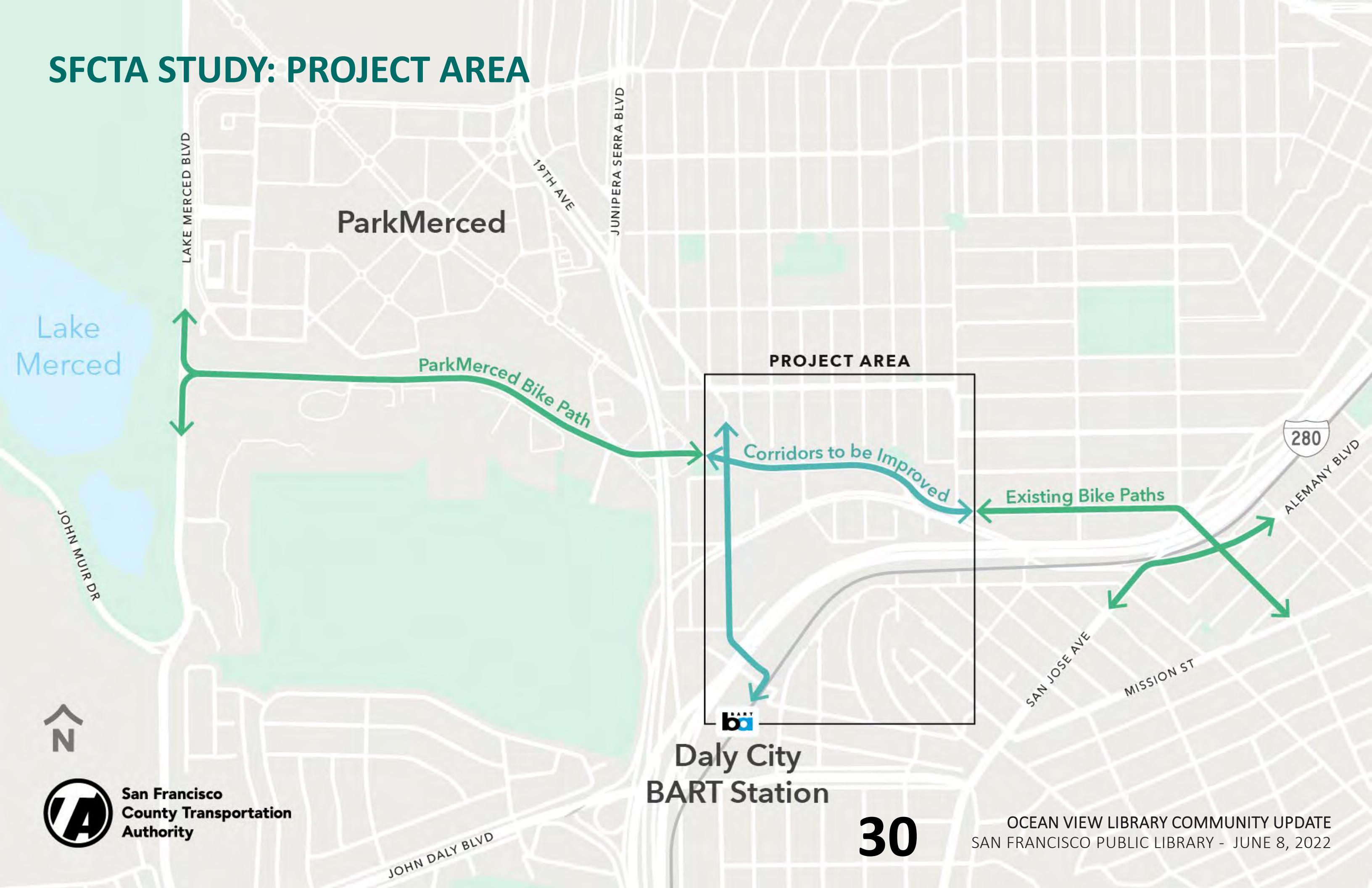
## OTHER LOCAL INITIATIVES

### **San Francisco County Transportation Authority, Brotherhood Way Active Transportation and Open Space Plan:**

**A community driven planning process to develop near- and long-term concepts for streets that improve safety, connectivity, and circulation within the OMI and Merced Extension Triangle neighborhoods.**

The study aligns with needs, goals, and community feedback heard through ConnectSF, San Francisco's long range planning process and will help implement San Francisco's Vision Zero road safety policy as well as the adopted regional strategy in Plan Bay Area 2050 to create healthy and safe streets.

# SFCTA STUDY: PROJECT AREA



ParkMerced

PROJECT AREA

Corridors to be Improved

Existing Bike Paths

280

Daly City  
BART Station

30



San Francisco  
County Transportation  
Authority

OCEAN VIEW LIBRARY COMMUNITY UPDATE  
SAN FRANCISCO PUBLIC LIBRARY - JUNE 8, 2022

# SFCTA STUDY SCHEDULE

Starts	<b>November 2022</b>
Duration	<b>2 years</b>
Public Outreach	<b>Spring 2023 - Fall 2024</b>
Recommendations	<b>Summer 2024</b>
Final Plan	<b>Early 2025</b>







**THANK YOU!**