



Facilities and Small Capital Projects Update

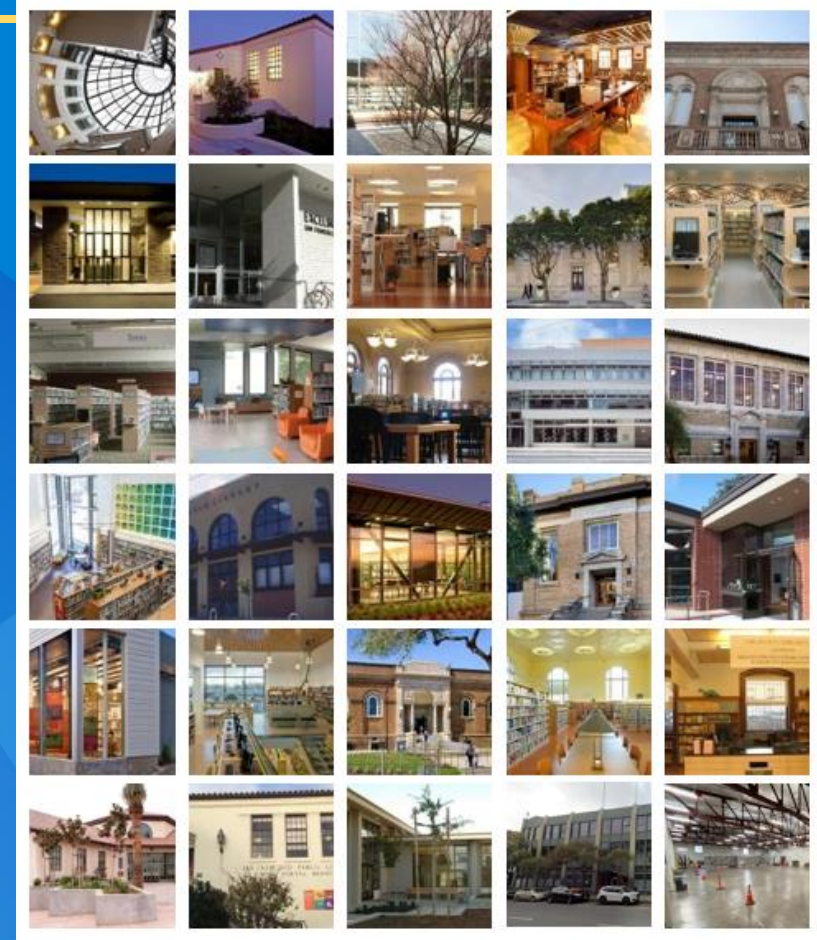
John Cunha
Facilities
April 20, 2023
San Francisco Library Commission



SFPL Facilities Overview

SFPL Facilities maintains 30 Library buildings

- Main Library: 376,000 sq. ft.
- 27 Branch Libraries: 229,574 sq. ft.
- Support Services Building: 43,182 sq. ft.
- 750 Brannan Street: 24,173 sq. Ft.



Highlights from the units within SFPL Facilities

Custodial

- Continuing to fill vacancies
- Providing outstanding service

Delivery Services

- Recently filled crucial position in Stockroom
- Focusing on improving operations

Engineering

- Continuing to fill vacancies & encouraging growth opportunities within
- Focusing on training for smooth continuity of operations

Security

- Increasing staff
- Focusing on new training & equipment
- Expanding mobile patrol & improving efficiency



In the past 2 years,
we have remained
committed to SF needs by...

- Serving as a community center
- Activating as inclement weather and poor Air Quality Index (AQI) respite centers
- Promoting recovery
- Reopening all our libraries for public service



Project Accomplishments

Recently completed projects:

- Main Library Elevator Upgrade
- Marina Branch Library Roof & Waterproofing
- Support Services Building Windows Replacement



Marina Branch Library Roof & Waterproofing



Main Library Elevator Renewal



Support Services Building Windows





Active Projects



750 Brannan Street Facility – Phase 2 - Compact Shelving



Park Branch Library Roof & Waterproofing



Talking Books and Braille Center Remodel



Emerging Projects

Projects on the horizon

- Main Library Roof
- Main Library Seismic Moat
- Support Services Building Energy Efficiency



SFPL Facilities Needs and Priorities

- Maintain state of good repair by focusing on funding to deliver as-needed repairs and renewals
- Prioritize energy efficiency and climate resilience improvements through delivering and funding
- Pursue Citywide capital for major projects informed by forthcoming asset assessment (targeted for FY24)
- Support programmatic priorities by considering facilities needs as part of the forthcoming SFPL Strategic and Racial Equity Planning



Resilient San Francisco

- Respite Centers
- Create resilient and efficient facilities





Thank You!

